



ARTESIAN SPAS™  
WELLNESS FOR EVERY BODY

# Island Spas™





Neck Jets



Footblasters





YOUR IDEAL  
**ISLAND RETREAT**  
IS YOURS TO CREATE





## Built to stand the test of time.

Maintenance free cabinetry,  
energy efficient insulation  
and a durable acrylic spa  
shell ensures a worry-free  
spa experience.

# Island Spas ELITE™

Powered by DIRECTFLOW Personal Control®

Our top-of-the-line **Island Elite** models provide you with the *ultimate* individual control and *best* hydrotherapy experience possible. The upgrade to the Island Spa shares Artesian Elite's patented Variable Control System. The most highly customizable spas in the industry. Create your own paradise.



## CAPTAIN SEAT PERSONAL CONTROL

Control your *personal massage* pressure with individual seat pumps.

## Antigua ELITE

84 in. x 84 in. x 36 in.

213 cm x 213 cm x 91 cm

Seating Capacity 6

55 Jets | Acrylic: White Pearl

# Island Spas ELITE™

Powered by DIRECTFLOW Personal Control®



## Captiva ELITE

84 in. x 84 in. x 36 in.

213 cm x 213 cm x 91 cm

Seating Capacity 7

55 Jets | Acrylic: White Pearl

## CAPTAIN SEAT PERSONAL CONTROL

Control your *personal massage* pressure with individual seat pumps.



# Island Spas ELITE™

Powered by DIRECTFLOW Personal Control®



## CAPTAIN SEAT PERSONAL CONTROL

Control your *personal massage* pressure with individual seat pumps.

*“I feel at peace in my  
Island Spa.”*

Owner from Toronto, Ontario

## Grand Bahama ELITE

91 in. x 91 in. x 36 in.

231 cm x 231 cm x 91 cm

Seating Capacity 6

65 Jets | Acrylic: White Pearl



# Island Spas ELITE™

Powered by DIRECTFLOW Personal Control®



## CAPTAIN SEAT PERSONAL CONTROL

Control your *personal massage* pressure with individual seat pumps.

- custom massage seats
- more efficient
- reduces operation cost

## Grand Cayman ELITE

91 in. x 91 in. x 36 in.

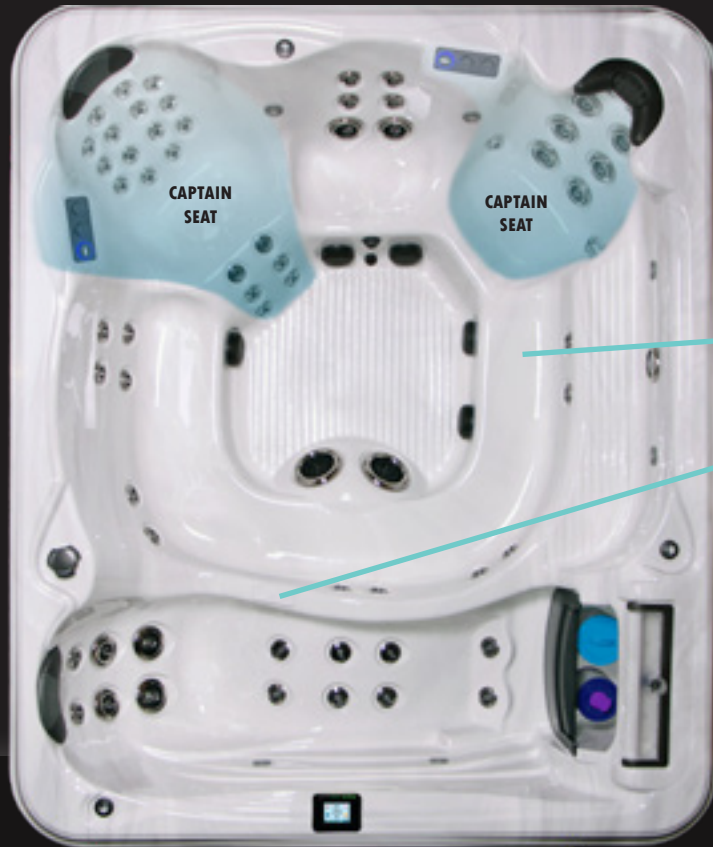
231 cm x 231 cm x 91 cm

Seating Capacity 7

65 Jets | Acrylic: White Pearl

# Island Spas ELITE™

Powered by DIRECTFLOW Personal Control®



## CAPTAIN SEAT PERSONAL CONTROL

Control your *personal massage* pressure with individual seat pumps.

A circular bench offers you additional seating.

*Rejuvenate* your tired hands and boost circulation with the hand massage tracks.



## Isla Margarita ELITE

108 in. x 91 in. x 36 in.

274 cm x 231 cm x 91 cm

Seating Capacity 9

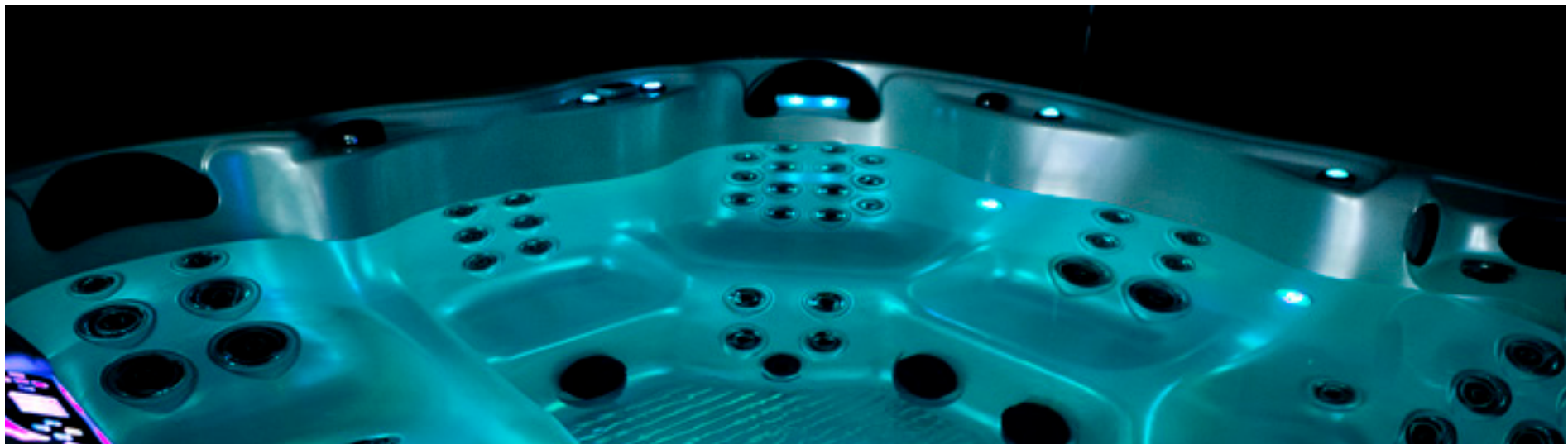
67 Jets | Acrylic: Silver Marble

**Island Spas ELITE spaTouch Topside Features:**

Color Touchscreen Panel, WiFi Ready (Module Required), Multi-language Interface



# WATER FEATURES & LED LIGHTING



# Island Spas™



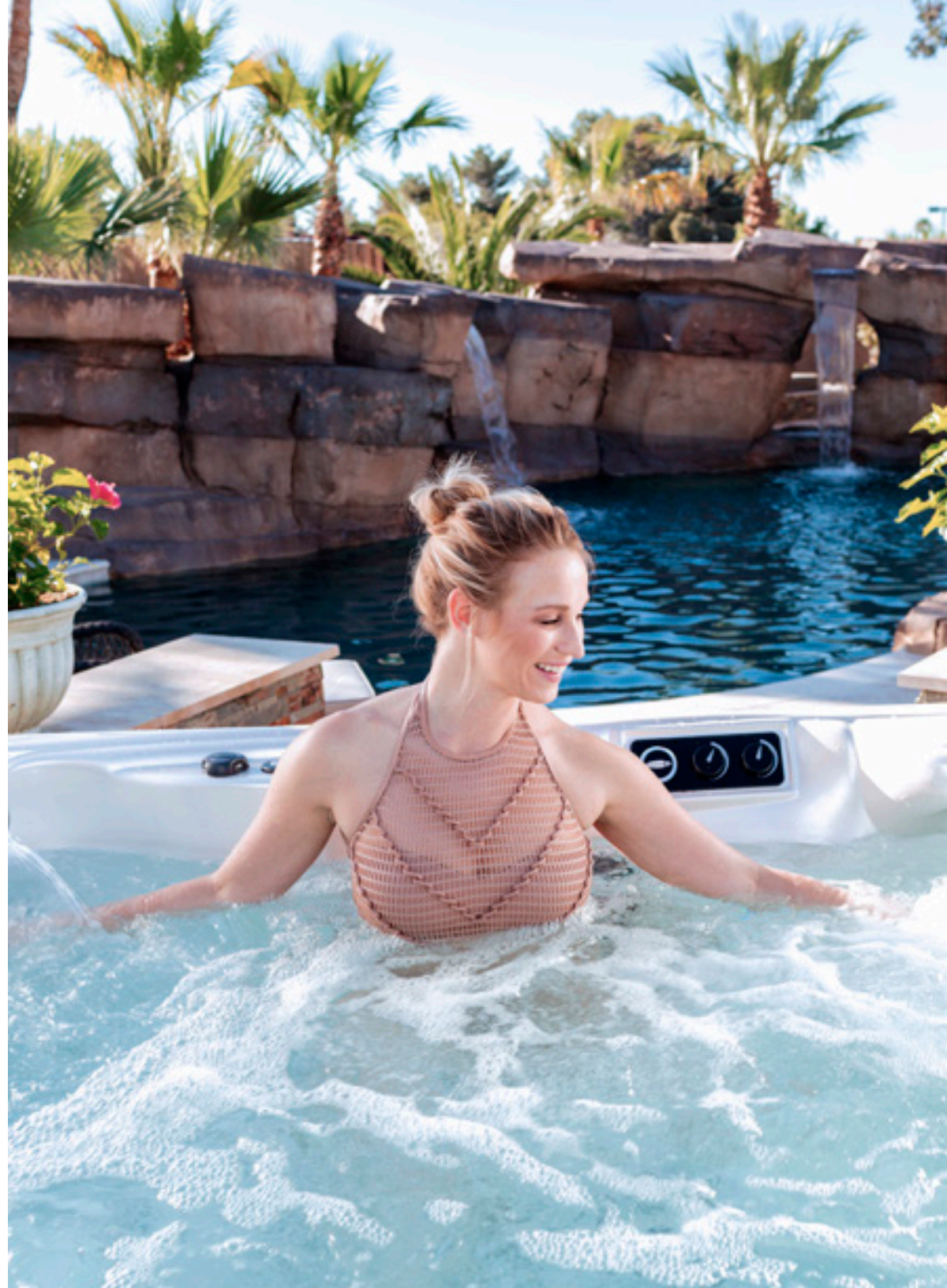
## Santa Cruz

84 in. x 61 in. x 32 in.

213 cm x 155 cm x 81 cm

Seating Capacity 3

33 Jets | Acrylic: White Pearl



# Island Spas™



## Nevis

84 in. x 78 in. x 34 in.

213 cm x 198 cm x 86 cm

Seating Capacity 6

45 Jets | Acrylic: White Pearl



# Island Spas™



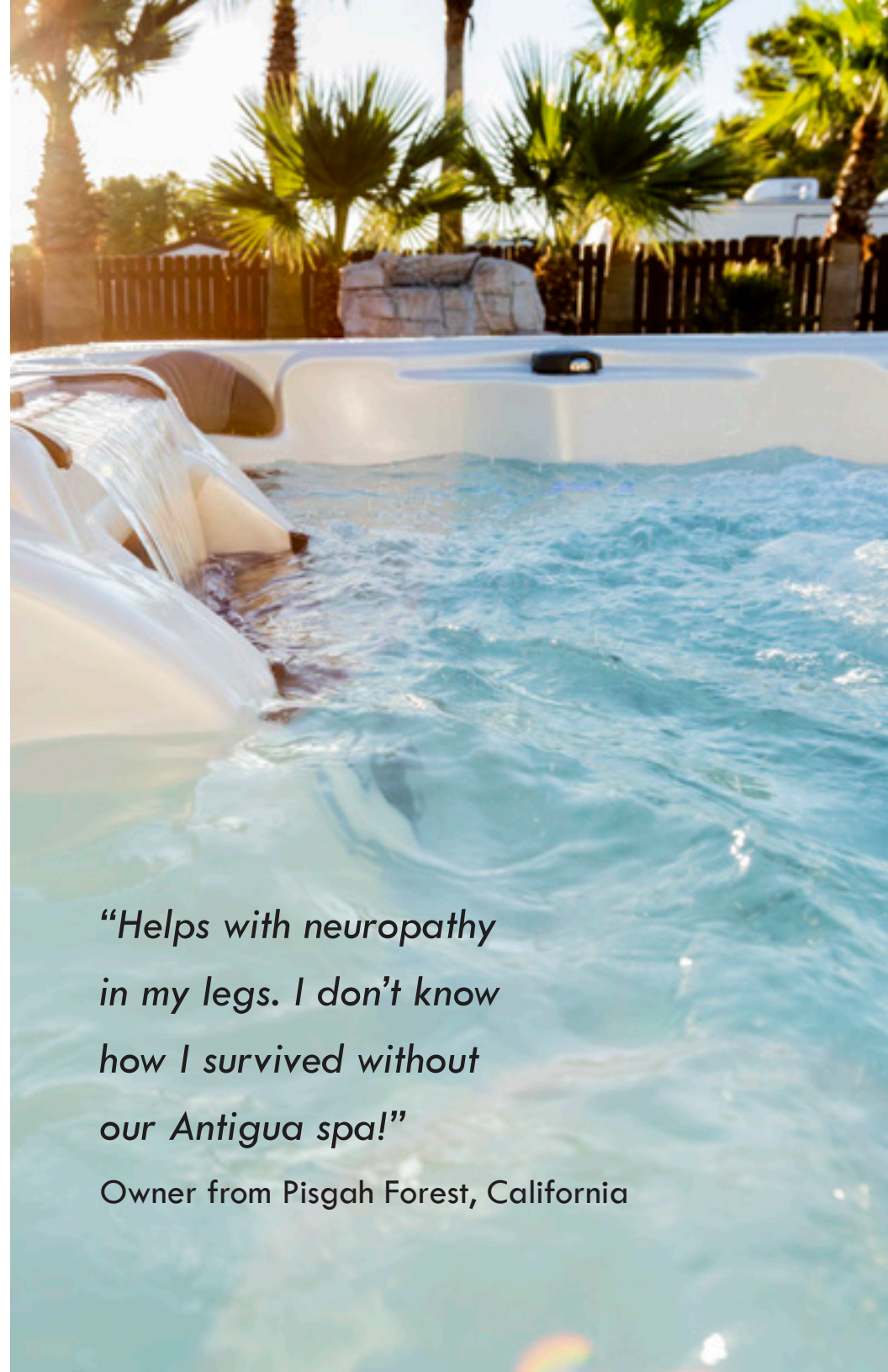
## Antigua

84 in. x 84 in. x 36 in.

213 cm x 213 cm x 91 cm

Seating Capacity 6

52 Jets | Acrylic: White Pearl



*“Helps with neuropathy  
in my legs. I don’t know  
how I survived without  
our Antigua spa!”*

Owner from Pisgah Forest, California

# Island Spas™



## Captiva

84 in. x 84 in. x 36 in.

213 cm x 213 cm x 91 cm

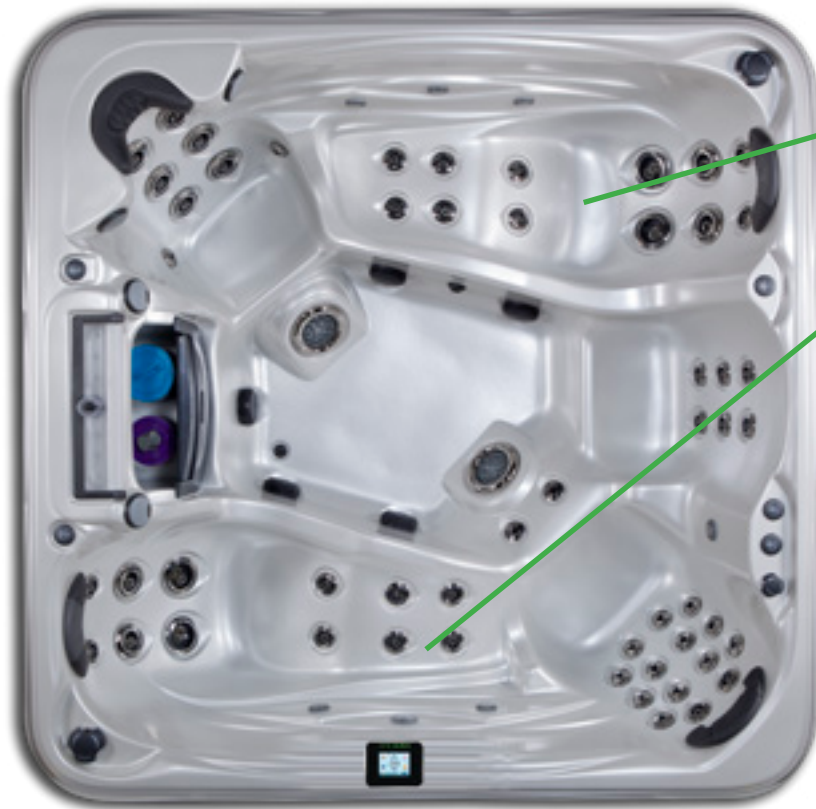
Seating Capacity 7

52 Jets | Acrylic: White Pearl





# Island Spas™



## The Double Lounger

The **Barbados** gives you plenty of reasons to relax. With multiple jet arrangements, two loungers and open barrier seating, this spa is designed for you and your guest to lounge back and **enjoy a soothing yet powerful hydrotherapy experience.**

## Barbados

91 in. x 91 in. x 36 in.

231 cm x 231 cm x 91 cm

Seating Capacity 5

61 Jets | Acrylic: White Pearl



# Island Spas™



## The Single Lounger

The **Grand Bahama** fulfills all seating arrangement needs with its single lounger and open seating.



The **Tranquility Fall with LED lighting** options will turn any backyard into an oasis.

## Grand Bahama

91 in. x 91 in. x 36 in.

231 cm x 231 cm x 91 cm

Seating Capacity 6

61 Jets | Acrylic: White Pearl

# Island Spas™



## Grand Cayman

91 in. x 91 in. x 36 in.

231 cm x 231 cm x 91 cm

Seating Capacity 7

62 Jets | Acrylic: White Pearl



# Island Spas™



## Isla Margarita

108 in. x 91 in. x 36 in.

274 cm x 231 cm x 91 cm

Seating Capacity 9

71 Jets | Acrylic: White Pearl



# Island Spas™

## BIGGER IS BETTER

Release stress and send your worries away while sitting in the new Circular Bench that offers additional seating for a total of 9 seats.



### The *Ultimate* Island Spa

Two full-body lounge seats are **handcrafted and molded to support your body in a natural position**. The patented, helix inspired jet design provides you with a double spiral jet pulsation for the ultimate massage.

## Bimini

91 in. x 132 in. x 37 in.

231 cm x 335 cm x 94 cm

Seating Capacity 10

72 Jets | Acrylic: Silver Marble

# Relax, You Deserve It

Release stress and send your worries away as you relax in your own Island Spa! The St. Kitts comes standard with a GFCI cord, letting you power the spa with any standard 20 amp wall outlet.



*(Only available in the United States and Canada)*

## St. Kitts

84 in. x 78 in. x 34 in.

213 cm x 198 cm x 86 cm

Seating Capacity 6

33 Jets | Acrylic: White Pearl





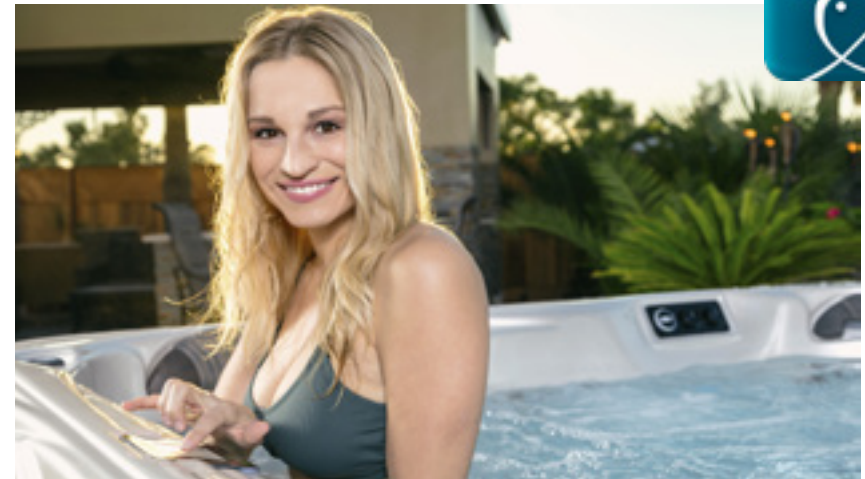
## STEREOS

Treat yourself to a concert in the comfort of your own home. The high-quality speakers, subwoofers, and stereo settings available from Artesian Spas will fill your space with music. All of our stereos are equipped with bluetooth for your convenience. **The Premium Infinity® Sound System by Harman** and the **Bluetooth Music Experience** both feature an auxiliary input so that you can plug in your own music player and enjoy.

## ADVANCED DIGITAL CONTROL SYSTEM

**WiFi Enabled | Multiple Languages | Easy to Use | Diagnostics**

Artesian Spas' next generation spa control system takes spa control to a whole new level. The sleek new design includes a large, easy-to-read back-lit LCD screen, and easy to follow menus. With a simple download from Apple's App Store and Google Play for Android devices, you now have the ability to control your spa system wirelessly!



## WORLDWIDE WIFI APP MODULE



The Worldwide App Module option, allows you to access your hot tub using an app on your smart device (Android™ or iPhone®) via a direct connection anywhere in the local proximity of your tub. Gain access anywhere in your house that you can connect to your local WiFi network, or anywhere in the world you have an internet connection to your smart device via 3G, 4G, 5G or WiFi hot spots.

With the app, you can ensure that your hot tub will be ready whenever you want to take a dip. The App provides full interface control so you can set the temperature, turn pumps on and off and even set filtration cycles - all from your smartphone or tablet.

\*The app's cloud access cost is free for the 1st 12 months and then \$24 per year after. If not renewed after 12 months, the app will continue to operate in local mode only. \*WiFi module purchased separately.

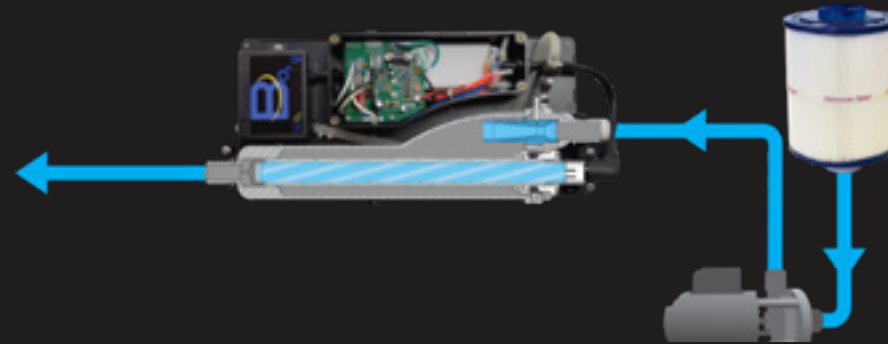


# WATER PURIFICATION

Our water purification system virtually eliminates the need for chemicals. Your skin will feel soft, clean and free of harsh chemicals. Clean spa water made easy...nature's way.



=



The Diamond AOP™ process combines the Nature2® option, Microfiltration, high efficiency Circulation Pump, and the AquaNova™ UVC & Ozone Spa Sanitizer, to create a highly advanced oxidation process (AOP) for water purification.

## FEATURES OF DIAMOND AOP:

- \* Sanitation lamp is fully serviceable, eliminating the need for AOP unit replacement.
- \* Indicator LEDs change colors to provide an alert for the need to replace the UV-C sanitation lamp.
- \* The AOP unit utilizes a dedicated Corona Discharge (CD) ozone generator in conjunction with UV-C to provide a highly effective sanitation process.



Artesian Spas brings you the patented in-line FROG® @ease™ system. This breakthrough system in water-care combines Fresh Mineral Water™ with SmartChlor™ Technology to provide cleaner, clearer and softer spa water that's far easier to maintain.

MINERAL  
CARTRIDGE  
LASTS 4 MONTHS

SMARTCHLOR™  
CARTRIDGE  
LASTS 3-4 WEEKS



Kills Bacteria  
2 Ways

Self  
Regulates  
for continuous  
clear water

Reinvented  
Chlorine

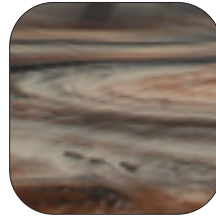
Up to  
75% Less  
Chlorine

Only Shock  
Once  
a Month



# ACRYLIC COLORS

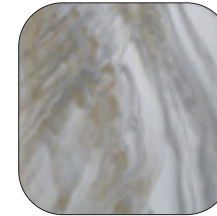
## Luster Swirls\*



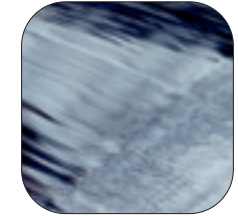
Tuscan Sun  
+



Midnight  
Canyon  
+

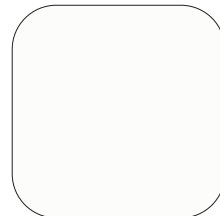


Smoky  
Mountains  
+



Storm Clouds

## Solid



White

## Marbles



Silver Marble  
\*\*/+

## Luster



White Pearl  
\*\*\*/+

## Metallix\*



Glacier  
Mountain  
+

# STEPS



Black

\*Upgrade Colors | \*\*Bimini available color | \*\*\*Standard on All Models Except for Santa Cruz  
| +Isla Margarita Available Color

## GRANDWOOD CABINETS

*Grandwood Cabinets feature a tight grain pattern along with subtly varying shades of color. This subtle variance creates a more realistic look and feel of*



Grey



Charcoal Black



Java

## ALL SEASONS SHIELD COVERS

*Our All Seasons Shield Cover fabric is 100% solution-dyed polyester that's light-weight, extremely durable and does not absorb water.*



Stone



Midnight



Pinot





## Antigua Elite

84 in. x 84 in. x 36 in.

213 cm x 213 cm x 91 cm

Seating Capacity 6

845 lb 383 kg  
325 gal 1230 L

**Jets Pumps**  
**55** (1) 6.0 BHP (3.0 HP continuous) 1-Spd  
(2) 3.0 BHP (1.5 HP continuous) 1-Spd



## Captiva Elite

84 in. x 84 in. x 36 in.

213 cm x 213 cm x 91 cm

Seating Capacity 7

845 lb 383 kg  
340 gal 1287 L

**Jets Pumps**  
**55** (1) 6.0 BHP (3.0 HP continuous) 1-Spd  
(2) 3.0 BHP (1.5 HP continuous) 1-Spd



## Grand Bahama Elite

91 in. x 91 in. x 36 in.

231 cm x 231 cm x 91 cm

Seating Capacity 6

947 lb 430 kg  
405 gal 1533 L

**Jets Pumps**  
**65** (1) 6.0 BHP (3.0 HP continuous) 1-Spd  
(3) 3.0 BHP (1.5 HP continuous) 1-Spd



## Grand Cayman Elite

91 in. x 91 in. x 36 in.

231 cm x 231 cm x 91 cm

Seating Capacity 7

947 lb 430 kg  
330 gal 1249 L

**Jets Pumps**  
**65** (1) 6.0 BHP (3.0 HP continuous) 1-Spd  
(3) 3.0 BHP (1.5 HP continuous) 1-Spd



## Isla Margarita Elite

108 in. x 91 in. x 36 in.

274 cm x 231 cm x 91 cm

Seating Capacity 9

1000 lb 454 kg  
465 gal 1760 L

**Jets Pumps**  
**67** (1) 6.0 BHP (3.0 HP continuous) 1-Spd  
(3) 3.0 BHP (1.5 HP continuous) 1-Spd



## Santa Cruz

84 in. x 61 in. x 32 in.

213 cm x 155 cm x 81 cm

Seating Capacity 3

618 lb 280 kg  
215 gal 814 L

**Jets Pumps**  
**33** (2) 3.0 BHP (1.5 HP continuous) 1-Spd



## Nevis

84 in. x 78 in. x 34 in.

213 cm x 198 cm x 86 cm

Seating Capacity 6

769 lb 349 kg  
300 gal 1136 L

**Jets Pumps**  
**45** (2) 5.0 BHP (2.5 HP continuous) 1-Spd  
**45 DB** (2) 5.0 BHP (2.5 HP continuous) 1-Spd  
(1) 3.0 BHP (1.5 HP continuous) 1-Spd  
**44 SB** (1) 6.0 BHP (3.0 HP continuous) 1-Spd  
(1) 3.0 BHP (1.5 HP continuous) 1-Spd  
**33** (2) 3.0 BHP (1.5 HP continuous) 1-Spd  
**33 DB** (3) 3.0 BHP (1.5 HP continuous) 1-Spd  
**32 SB** (1) 5.0 BHP (2.5 HP continuous) 1-Spd  
(1) 3.0 BHP (1.5 HP continuous) 1-Spd



## Antigua

84 in. x 84 in. x 36 in.

213 cm x 213 cm x 91 cm

Seating Capacity 6

845 lb 383 kg  
330 gal 1249 L

**Jets Pumps**  
**52** (2) 6.0 BHP (3.0 HP continuous) 1-Spd  
**51 DB** (1) 6.0 BHP (3.0 HP continuous) 1-Spd  
(1) 5.0 BHP (2.5 HP continuous) 1-Spd  
(1) 3.0 BHP (1.5 HP continuous) 1-Spd  
**45** (2) 5.0 BHP (2.5 HP continuous) 1-Spd  
**45 DB** (2) 5.0 BHP (2.5 HP continuous) 1-Spd  
(1) 3.0 BHP (1.5 HP continuous) 1-Spd  
**44 SB** (1) 6.0 BHP (3.0 HP continuous) 1-Spd  
(1) 3.0 BHP (1.5 HP continuous) 1-Spd  
**33** (2) 3.0 BHP (1.5 HP continuous) 1-Spd  
**33 DB** (3) 3.0 BHP (1.5 HP continuous) 1-Spd  
**32 SB** (1) 5.0 BHP (2.5 HP continuous) 1-Spd  
(1) 3.0 BHP (1.5 HP continuous) 1-Spd



## Captiva

84 in. x 84 in. x 36 in.

213 cm x 213 cm x 91 cm

Seating Capacity 7

845 lb 383 kg  
330 gal 1249 L

**Jets Pumps**  
**52** (2) 6.0 BHP (3.0 HP continuous) 1-Spd  
**49 DB** (1) 6.0 BHP (3.0 HP continuous) 1-Spd  
(1) 5.0 BHP (2.5 HP continuous) 1-Spd  
(1) 3.0 BHP (1.5 HP continuous) 1-Spd  
**46** (2) 5.0 BHP (2.5 HP continuous) 1-Spd  
**45 DB** (2) 5.0 BHP (2.5 HP continuous) 1-Spd  
(1) 3.0 BHP (1.5 HP continuous) 1-Spd  
**44 SB** (1) 6.0 BHP (3.0 HP continuous) 1-Spd  
(1) 3.0 BHP (1.5 HP continuous) 1-Spd  
**33** (2) 3.0 BHP (1.5 HP continuous) 1-Spd  
**33 DB** (3) 3.0 BHP (1.5 HP continuous) 1-Spd  
**32 SB** (1) 5.0 BHP (2.5 HP continuous) 1-Spd  
(1) 3.0 BHP (1.5 HP continuous) 1-Spd



## Barbados

91 in. x 91 in. x 36 in.

231 cm x 231 cm x 91 cm

Seating Capacity 5

908 lb 412 kg  
410 gal 1552 L

**Jets Pumps**  
**63** (2) 6.0 BHP (3.0 HP continuous) 1-Spd  
**61 DB** (2) 6.0 BHP (3.0 HP continuous) 1-Spd  
(1) 3.0 BHP (1.5 HP continuous) 1-Spd



84 in. x 78 in. x 34 in.

213 cm x 198 cm x 86 cm

Seating Capacity 6

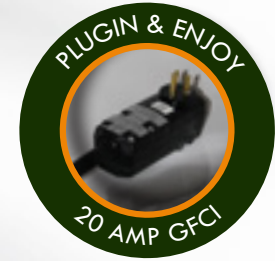
769 lb 349 kg

295 gal 1117 L

**Jets**      **Pumps**

33              (2) 1.0 BHP (0.6 HP continuous) 1-Spd

**St. Kitts** (120V / 240V)



*(St. Kitts is only available in the United States and Canada)*



**Grand Cayman**

91 in. x 91 in. x 36 in.

231 cm x 231 cm x 91 cm

Seating Capacity 7

947 lb 430 kg

405 gal 1533 L

**Jets**      **Pumps**

**62 or 61 DB** (2) 6.0 BHP (3.0 HP continuous) 1-Spd  
(1) 3.0 BHP (1.5 HP continuous) 1-Spd

**52** (2) 6.0 BHP (3.0 HP continuous) 1-Spd

**51 DB** (1) 6.0 BHP (3.0 HP continuous) 1-Spd  
(1) 5.0 BHP (2.5 HP continuous) 1-Spd  
(1) 3.0 BHP (1.5 HP continuous) 1-Spd

**46** (2) 5.0 BHP (2.5 HP continuous) 1-Spd

**45 DB** (2) 5.0 BHP (2.5 HP continuous) 1-Spd  
(1) 3.0 BHP (1.5 HP continuous) 1-Spd

**44 SB** (1) 6.0 BHP (3.0 HP continuous) 1-Spd  
(1) 3.0 BHP (1.5 HP continuous) 1-Spd

**33** (2) 3.0 BHP (1.5 HP continuous) 1-Spd

**33 DB** (3) 3.0 BHP (1.5 HP continuous) 1-Spd

**32 SB** (1) 5.0 BHP (2.5 HP continuous) 1-Spd  
(1) 3.0 BHP (1.5 HP continuous) 1-Spd



**Grand Bahama**

91 in. x 91 in. x 36 in.

231 cm x 231 cm x 91 cm

Seating Capacity 6

947 lb 430 kg

390 gal 1476 L

**Jets**      **Pumps**

**62 or 61 DB** (2) 6.0 BHP (3.0 HP continuous) 1-Spd  
(1) 3.0 BHP (1.5 HP continuous) 1-Spd

**52** (2) 6.0 BHP (3.0 HP continuous) 1-Spd

**51 DB** (1) 6.0 BHP (3.0 HP continuous) 1-Spd  
(1) 5.0 BHP (2.5 HP continuous) 1-Spd  
(1) 3.0 BHP (1.5 HP continuous) 1-Spd

**45** (2) 5.0 BHP (2.5 HP continuous) 1-Spd

**45 DB** (2) 5.0 BHP (2.5 HP continuous) 1-Spd  
(1) 3.0 BHP (1.5 HP continuous) 1-Spd

**44 SB** (1) 6.0 BHP (3.0 HP continuous) 1-Spd  
(1) 3.0 BHP (1.5 HP continuous) 1-Spd

**33** (2) 3.0 BHP (1.5 HP continuous) 1-Spd

**33 DB** (3) 3.0 BHP (1.5 HP continuous) 1-Spd

**32 SB** (1) 5.0 BHP (2.5 HP continuous) 1-Spd  
(1) 3.0 BHP (1.5 HP continuous) 1-Spd



**Isla Margarita**

108 in. x 91 in. x 36 in.

274 cm x 231 cm x 91 cm

Seating Capacity 9

1000 lb 454 kg

480 gal 1817 L

**Jets**      **Pumps**

**71** (2) 6.0 BHP (3.0 HP continuous) 1-Spd  
(1) 3.0 BHP (1.5 HP continuous) 1-Spd



**Bimini**

91 in. x 132 in. x 37 in.

231 cm x 335 cm x 94 cm

Seating Capacity 10

1258 lb 571 kg

620 gal 2347 L

**Jets**      **Pumps**

**72** (2) 6.0 BHP (3.0 HP continuous) 1-Spd  
(1) 5.0 BHP (2.5 HP continuous) 1-Spd

**52** (2) 6.0 BHP (3.0 HP continuous) 1-Spd

SB: Single Footblaster | DB: Dual Footblaster

BHP: Brake Horsepower | HP: Horsepower

# Island Spas ELITE™

Powered by DIRECTFLOW Personal Control®

## Island Elite Standard Features

- Warranty:
  - Lifetime Structure<sup>a</sup>
  - 7-Year Surface
  - 5-Year Parts, Labor, Plumbing and Electrical \*\*\*\*
  - 2-Year Cabinet
- WhisperPure™ Circulation System with Microfilter
- Helix SS Jet Design
- Dual Footblaster Jets
- (2) DIRECTFLOW Personal Controls®
- spaTouch Topside:
  - Color Touchscreen Panel, WiFi Ready (Module Required), Multi-language Interface
- Heater: 5.5 kW North America (60 Hz), 3.0 kW Export (50 Hz)
- All Seasons Shield Covers
- Full Foam with ABS Bottom
- Blue LED - 5 in. Spa Light
- Maintenance Free Grandwood Cabinet

## Island Elite Optional Features

- Stereo System:
  - 1) Premium Infinity® Sound System by Harman:
    - Bluetooth Receiver, USB and Auxiliary Input, AM/FM, (4) 3 in. Speakers, (2) 6.5 in. Exterior Speakers, Power Subwoofer
  - 2) Bluetooth® Music Experience:
    - Bluetooth Receiver, AM/FM, USB, Auxiliary Input, (4) 3 in. Speakers, Subwoofer
  - 3) bba™2 Audio:
    - Fully Integrated Bluetooth Audio Streaming, (4) 3 in. Speakers, Subwoofer
    - Optional (2) 3 in. Patio Speakers (Stereo System 2, 3)
- Water Purification:
  - 1) Diamond AOP™
  - 2) Crystal ProPure™ Ozone Mixing Chamber
  - 3) Ozonator
  - 4) FROG®@ease™ with SmartChlor™++
- LED Lighting:
  - 1) DynaBrite LED:
    - (1) 5 in. (6) 2 in. LED Lights, (2) Cabinet Lights, Lighted Air Controls, Pillowfall and/or Tranquility Fall (Option Sold Separately)
  - 2) DynaPoint LED:
    - (1) 5 in. (4) 2 in. LED Lights, Cabinet Lights, Lighted Pillowfall and/or Tranquility Fall (Option Sold Separately)
  - 3) DynaStar LED:
    - (1) 5 in. (4) 2 in. LED Lights
  - 4) Multicolor 10 LED
  - 5) Island Oasis Kick Rail LED (DynaStar, DynaPoint, or DynaBrite Required)
- Pump/Heater Valves
- 18 in. Tranquility Fall
- Pillowfall
- PermaBase ABS Pan
- Clear LED Footblaster Jets (DynaPoint or DynaBrite LED Required)
- Worldwide WiFi App Module:
  - Download App for Smart Device to Control Spa Wirelessly

++ Where Allowed By Law

\*\* Not Available on St. Kitts

\*\*\* Only Available on St. Kitts

\*\*\*\* Certain components not covered under this warranty

**The warranty printed in the booklet is for USA only. Please contact your local dealer for relevant warranty document in your region.**

## Island Standard Features

- Warranty:
  - Lifetime Structure<sup>a</sup>
  - 5-Year Surface
  - 3-Year Parts, Labor, Plumbing and Electrical
  - 2-Year Cabinet \*\*\*\*\*
- Helix SS Jet Design
- Heater: 5.5 kW for North America (60 Hz); 3.0 kW for Export (50 Hz) \*\*
- spaTouch Topside: \*\*
  - Color Touchscreen Panel, WiFi Ready (Module Required), Multi-language Interface
- All Seasons Shield Covers
- WhisperPure™ Circulation System with Microfilter
- Full Foam with ABS Bottom
- Blue LED - 3.5 in. Spa Light
- Maintenance Free Grandwood Cabinet
  
- Heater: 1.5 kW (120 V) / 5.5 kW (240 V) for North America (60 Hz) \*\*\*
- GFCI Cord: 15 ft 120V, 20 A for North America (60 Hz) \*\*\*

## Island Optional Features

- LED Lighting:
  - 1) DynaBrite LED:
    - (1) 3.5 in., (6) 2 in. LED Light, (2) Cabinet Lights, Air Controls, Lighted Pillowfall and/or Tranquility Fall (Option Sold Separately)
  - 2) DynaPoint LED:
    - (1) 3.5 in., (4) 2 in. LED Light, (2) Cabinet Lights, Lighted
  - 3) DynaStar LED:
    - (1) 3.5 in., (4) 2 in. LED Light
  - 4) Multicolor 10 LED
  - 5) Island Oasis Kick Rail LED (DynaStar, DynaPoint, or DynaBrite Required - Not Available on Bimini & Santa Cruz) \*\*
- Water Purification:
  - 1) Diamond AOP™
  - 2) Crystal ProPure™ Ozone Mixing Chamber
  - 3) Ozonator
  - 4) FROG® @ease™ with SmartChlor™++
- Pump/Heater Valves
- PermaBase ABS Pan (N/A on Bimini)
- Extended Warranty: 5-Year Parts, Labor, Plumbing and Electrical
- Stereo System (N/A on Santa Cruz):
  - 1) Premium Infinity® Sound System by Harman
    - Bluetooth Receiver, AM/FM, USB, Auxiliary Input, (4) 3 in. Speakers, (2) 6.5 in. Exterior Speakers, Power Subwoofer
  - 2) Bluetooth® Music Experience
    - Bluetooth Receiver, AM/FM, USB, Auxiliary Input, (4) 3 in. Speakers, Subwoofer
  - 3) bba™ 2 Audio
    - Fully Integrated Bluetooth Audio Streaming, (4) 3 in. Speakers, Subwoofer
    - Optional (2) 3 in. Patio Speakers (Stereo System 2, 3)
- Captiva 52, 46, 33 Side Foot Dome
- Footblasters Option (SB/DB)
  - Clear LED Footblaster (DynaPoint or DynaBrite LED Required) \*\*
- Pillowfall
- 18 in. Tranquility Fall
  
- Worldwide WiFi App Module:
  - Download App for Smart Device to Control Spa Wirelessly.



Built in the USA for the World: Artesian Spas are sold in over 68 countries.



# ARTESIAN SPAS™

WELLNESS FOR EVERY BODY

Corporate Office:

4720 N. Lamb Blvd. | Las Vegas, Nevada 89115

[www.ArtesianSpas.com](http://www.ArtesianSpas.com)

Specifications are subject to change without notice. Spa images have been digitally rendered and may or may not show optional features.

